

SST- table plate module size Größe S, SL, M, L

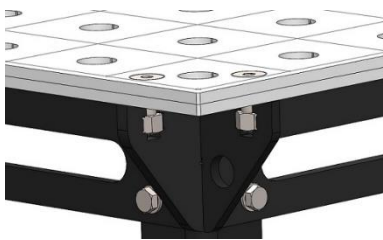
Tempotec plates for system working benches for application on individual frames or bases. SST system plates are featured with eighter an Ø28 hole grid. The system holes enabling various clamping capabilities as well as flexible options for mounting treatment or assembling technology.

Description	SST 16 S	SST 16 SL	SST 16 M	SST 16 L
Type-no.:	103201	103202	103203	103204
Tabletop demisions	1400 x 900(mm)	1950 x 950(mm)	2480 x 1230(mm)	2980 x 1480(mm)
Height of table plate dually	16mm	16mm	16mm	16mm
Height of table plate optionally	35mm (others on request)			
Material of tabletop	see table below	see table below	see table below	see table below
Diameter of holes at tabletop	Ø 28mm	Ø 28mm	Ø 28mm	Ø 28mm
Hole grid	100 x 100(mm)	100 x 100(mm)	100 x 100(mm)	100 x 100(mm)
Max. load	2000 kg	2000 kg	2000 kg	2000 kg
Net weight	179kg	257kg	405kg	583kg



Image: for expampe SST 16 SL

Work plates



Description

Tabletop build as a dual plate system with upper plate, lower plate and support construction of 2 beams lengthwise and 3 cross (4 across size L) beams achieving flatness acc. workstandard WN5110000 in dependance upon DIN ISO 2768-2. The dual plate design enables the use of different surface materials which can be chosen in accordance with the working task (see table materials). In standard top plate is made from material S355 (lower plate standard S235). The surface is carrying a Ø28mm hole grid 100x100mm which allows the usage of various clamping tools (available clamping tools can be selected in our website www.tempotec.de). At the top plate surface also a line grid is engraved in order to assist visual orientation. Due to the use of two 8mm plates in dual design the optimal thickness of the top plate is 16mm.

Material of top plate of tabletop	Opt. material description	Tensile strength MPa	Hardness HV / (HBa)
Regular steel ST52	S355, 1.0976	Rm 430-550	ca. 175 / (128-163)
Higher strength steel ST70	S700, 1.8974	Rm 780-950	ca. 265 / (220-280)
Stainless steel	304, 1.4301,Niro	Rm 500-700	ca. 205 / (150-200)
Other materials for special requirements	For example: Aluminium, electrical insolutating Materials for electrical installations		

Plate support construction



Image: size S, SL, M

Description

The dually buildt table plate gets completed with a robust plate integrated support construction, which ensures optimal flatness to of the top plate even with load up to 2000kg. At the other hand the plate support construction is leading the forces created by load into the table base.

The plate support construction of standard models is performed with 2 rails 10mm lengthwise and 3 (sizes S, SL, M) or even 4 (size L) 8mm integrated crossrails. The tables base can be mounted at the joints of the support rails. All parts of the table base are longlife coated in black RAL9005 (Powder or KTL).



Image: size L